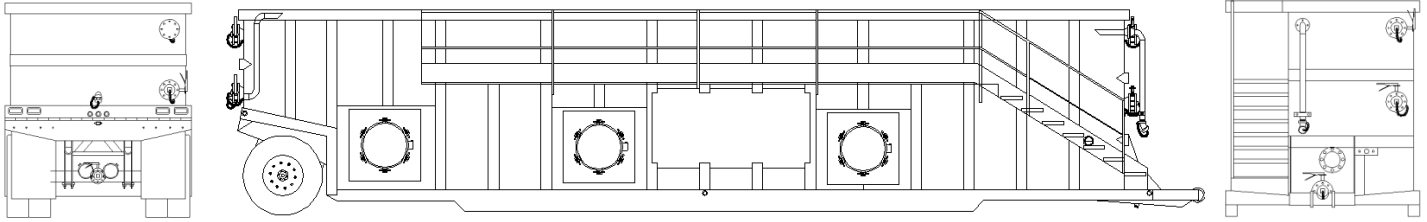




Manufacturing Inc.

DATA SHEET MODEL: STD-OT424

OPEN TOP TANK
17,800 GAL (424 BBL)



GENERAL INFORMATION

- **Capacity:** 424 BBL (17,800 gal/67,380 lbs) Stationary capacity
- **Height:** 9' - 6 1/4" (2.9 m) – to top of tank
- **Width:** 8'-6" (2.59 m)
- **Length:** 46' (14.02 m) - overall (nose to tail)
- **Weight:** 24,700 lbs (11,204 Kg)

STRUCTURAL DESIGN

- **Floor sheet:** 1/4" A36 plate
- **Side sheets:** 1/4" A36 plate
- **Front:** 1/4" A36 plate
- **Rear:** 1/4" A36 plate
- **Main floor rails:** 12" x 40' structural channels

FEATURES

- Smooth walls for easy cleaning
- V-Shaped floor for easy Draining
- **Frontal drain:** 4" Outlet port (Weld neck flange, butterfly valve, threaded flange, male plug & chain)
- **Rear drain:** 4" Outlet port (Weld neck flange, butterfly valve, threaded flange, male plug and handle lock)

FEATURES (CONT.)

- **Connectors:** 6" outlet port at rear (Weld neck flange w/Buna-N Gasket & blind flange)
8" outlet port for manifold w/Buna-N gasket & blind flange
(3) 6" Outlet ports (Weld neck flange, butterfly valve, threaded flange, male plug & chain), (1) at rear, (2) at front
- **Manways:** (3) 25" steel manways w/Buna-N Gasket on passenger side
- **Pipes:** 3" Internal feed line (4' length) at rear w/threaded female cap & chain
3" External feed line (4'-8" length) at front w/threaded female cap & chain
- **Stairway:** Anti-skid stairway integrated in tank w/safety handrail
- **Hook-up:** Frontal hook-up
- **Suspension:** Spring -10.2 TON (22,500 lbs) capacity
- **Wheels:** 8.25 x 22.5 (Conventional, 12 ply)
Axle: 71.5 track, 22,500 lbs. capacity

SURFACE DETAILS

- **Surface preparation:** Interior- SSPC-SP 10 Near White
Exterior- SSPC-SP 6 Commercial
- **Exterior Coating:** Primer coat: Carboline™ Carboguard 893
Finish coat: Carboline™ Carbothane 134 HG
- **Interior Coating:** Carboline Phenoline™ 310
- **Undercoating:** ZPG 20060b Undercoating
- **Safety Paint:** Carboline™ Safety Yellow – Stairway & handrails

TESTS PERFORMED

- **Water test:** 3 psi, 1st, 2nd y 3rd test (if necessary)
- **Surface profile test:** Deepness measure after blasting
- **Paint test:** Interior: 20 mils
Exterior 6 to 8 mils

OPTIONAL FEATURES

- Additional ports
- Additional manways
- Weir
- Gel line
- Jet line
- Manifold
- Lifting lugs
- ABS brake system
- Aluminum wheels
- Custom interior coating
- Custom exterior coating